

INSTALLATION INSTRUCTION

BEFORE YOU START, HERE IS SOME IMPORTANT INFORMATION.







! DANGER: Before installation, make sure the main power is cut off.

! WARNING: Installation must be performed by a qualified licensed electrician.

IMPORTANT

- This product contains glass parts. Take care while fitting or handling to prevent personal injury or damage to the product; If the glass is broken, please stop using it and replace it from agent or manufacturer.
- Ensure the mounting surface is dry and strong enough to bear four times the weight of the product for the safe fitting.
- Special care should be taken when drilling walls to avoid hidden pipes or electrical cables.
- The product covers the outlet box and the wirings after installation.

TOOLS REQUIRED

Description	Parts Image	Description	Parts Image
Tape Measure		Drill	
Spirit Level		Cross Head Screwdriver	
Pencil		Hammer	

MAINTENANCE

- Wipe clean with a soft, dry cloth. Never use abrasives or chemical cleaners.
- Please put a soft cushion under the mirror while you take the mirror down from the wall.

INSTALLATION STEPS

STEP 1

CUT OFF THE MAIN POWER SUPPLY.

STEP 2

Remove the mirror panel from the metal chassis.

IMPORTANT: For the mirror with touch switch, please slide the touch switch out of the slot at back of mirror before removing the mirror completely.

STEP 3

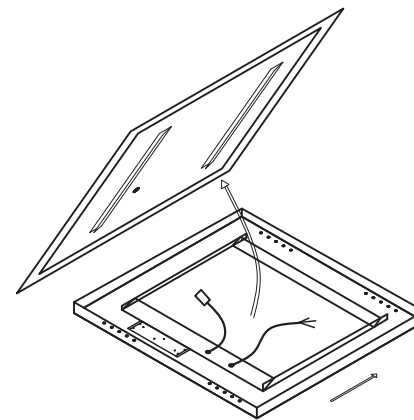
Place the metal chassis against the wall and mark the suitable position of the screw holes ensuring the chassis is level.

STEP 4

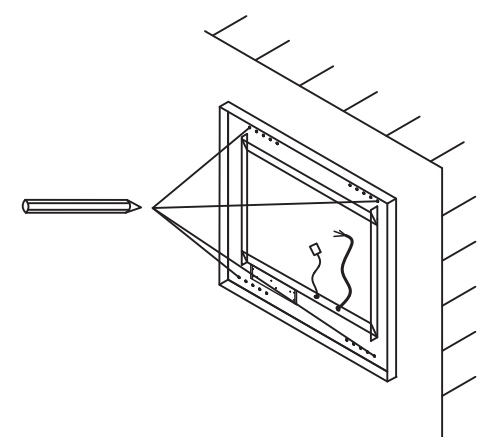
Drill the holes and put in the four wall plugs.

STEP 5

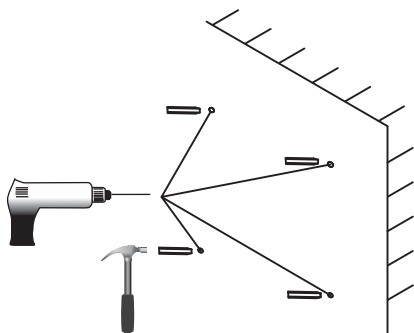
Screw the metal chassis onto the wall with the mounting screws supplied. Ensure the chassis is firmly against the wall surface.



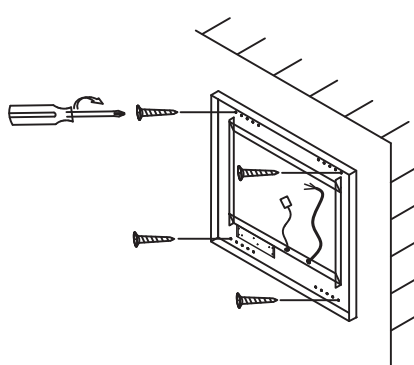
STEP 2



STEP 3



STEP 4



STEP 5

STEP 6

Take the wires of mirror through the metal plate supplied.

Connect the wires of mirror with the main power by the wire connectors.

BLACK WIRE --- POWER SUPPLY L (LIVE)

WHITE WIRE --- POWER SUPPLY N (NEUTRAL)

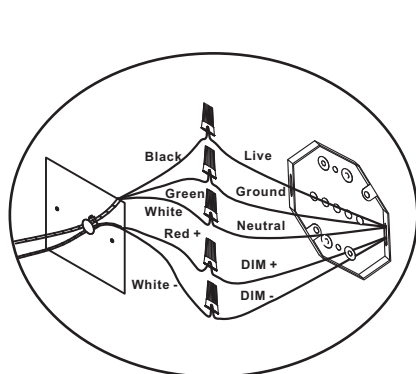
GREEN WIRE --- POWER SUPPLY E (EARTH)

IMPORTANT:

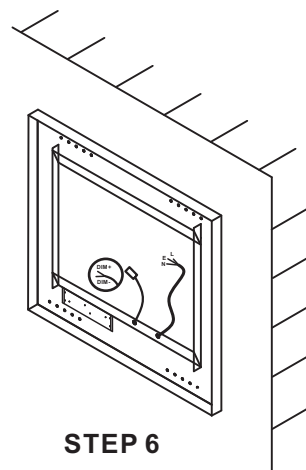
For the mirror with 0-10V dimming, please also connect 0-10V wires.

RED OR BLACK WIRE (DIM+) --- 0-10V WIRE (DIM+)

WHITE WIRE (DIM-) --- 0-10V WIRE (DIM-)



AC wiring and 0-10V wiring



STEP 6

STEP 7

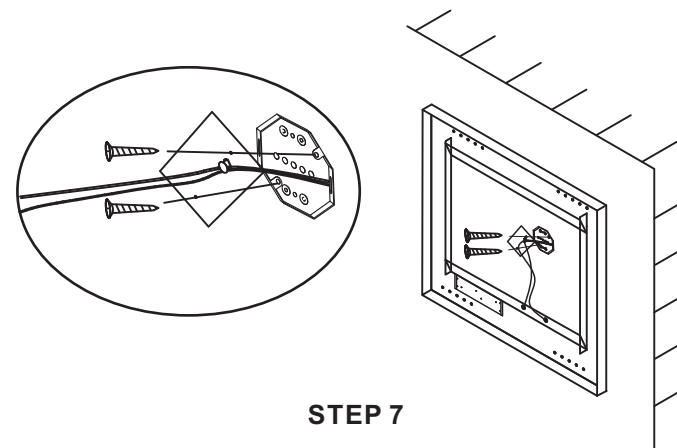
Lock the wires on the metal plate by the clamp.

Screw the metal plate on the junction box of the wall.

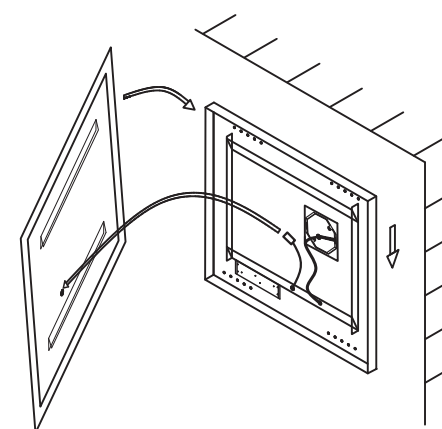
STEP 8

Hang the mirror panel on the metal chassis.

IMPORTANT: For the mirror with touch switch, slide the touch switch onto the slot at back of mirror before hanging the mirror panel.



STEP 7



STEP 8