



## **Commercial UVC Sterilizer**

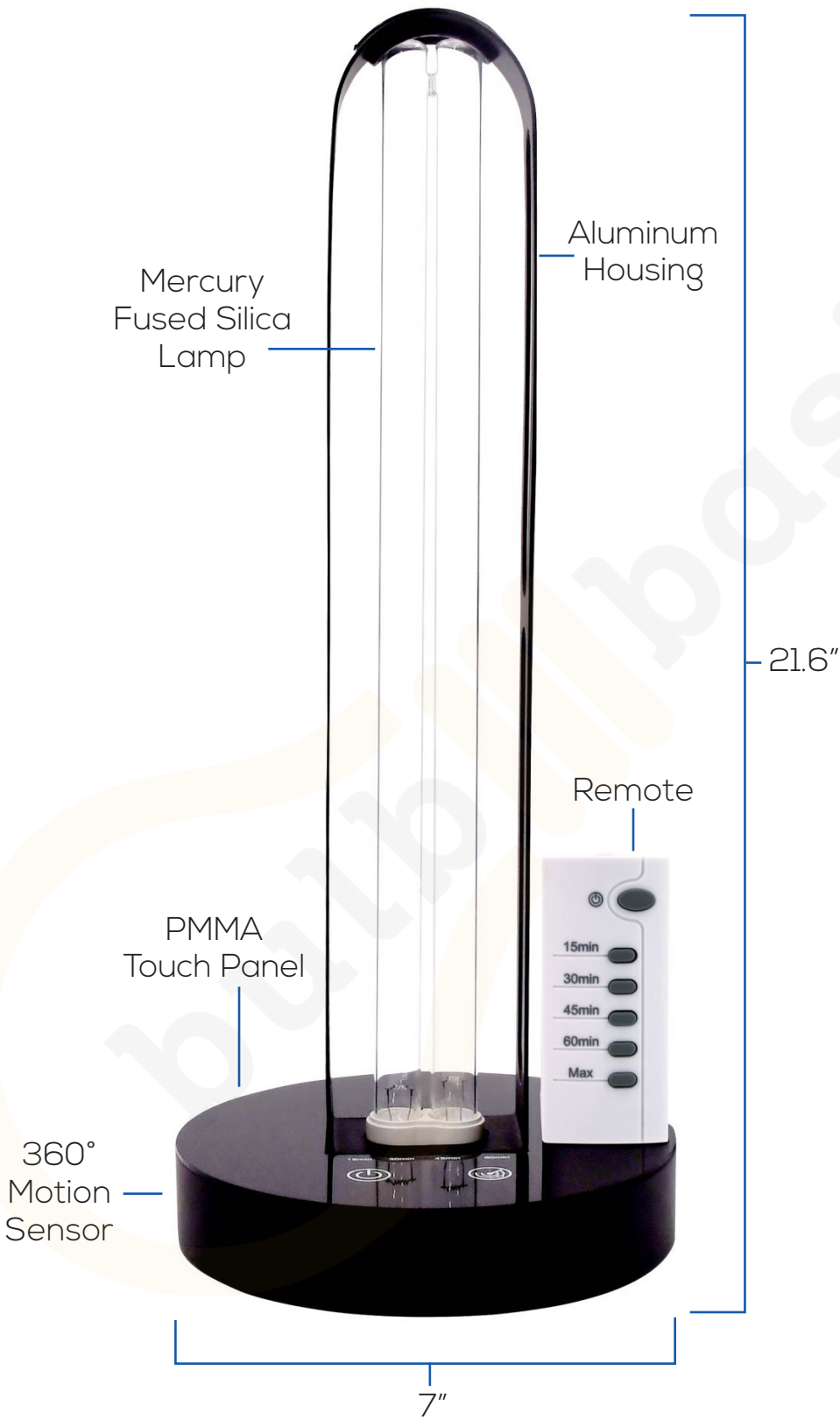
Portable 253.7 nm Ultraviolet Disinfection  
Kills Viruses, Bacteria, Fungi & More

## Commercial UVC Sterilizer

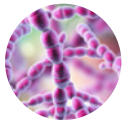


The Centers for Disease Control and Prevention (CDC) recommends a UV lamp intensity of **40  $\mu\text{W}/\text{cm}^2$**  at the center of the work area to ensure surface decontamination.

# Commercial UVC Sterilizer



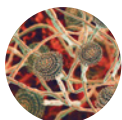
## UVC Kills



Viruses



Bacteria



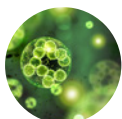
Fungi



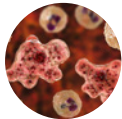
Mold



Yeast



Algae



Amoebas



Allergens



### FEATURES

1. Clinically proven to eliminate 99.9% of all viruses, bacteria, fungi, mold, yeast, algae, amoebas, and other germs and allergens within seconds of 253.7 nm UVC exposure.
2. Can be programmed and set with touch panel or remote control.
3. A 360° motion sensor deactivates the lamp when it detects movement within 16 feet.
4. Contact-free disinfection reduces the chance of human error and cross-contamination.
5. Hypoallergenic sanitizing does not leave irritants or toxic chemicals behind.
6. Reduces the need to buy and handle corrosive cleaners. (Does not replace soap/water)

### SPECIFICATIONS



Model:	Commercial UVC Sterilizer
Size:	21.6"(L) x 7"(W) x 7"(D) 2.9 lbs
Power:	55W
Voltage:	AC90 - 100V
UV Strength:	$\geq 253.1 \mu\text{W}/\text{cm}^2$ (at 3.5 ft)
Effective Range:	~650 ft <sup>2</sup>
UVC Wavelength:	253.7 nm
UVC Lamp:	Mercury Fused Silica
Bonus Features:	Motion Detector, Remote
Bulb Lifespan:	$\geq 8,000$ hours
Remote Range:	22 ft



### TIPS & SAFETY

- To maximize effectiveness, ensure the room to be disinfected is clear of debris
- Take care to avoid direct or prolonged exposure of UVC to skin and eyes
- Keep out of reach of children and pets, do not leave unattended while not in use
- Clear area of people, plants and animals
- Can be used near food, tests have not shown any loss in quality or nutrition
- Set on a small stand like a tripod
- If the lamp breaks use a wet paper towel to clean up, and do not inhale
- As distance from a subject is increased, exposure time should be prolonged

### INSTRUCTIONS

Plug in the device and place it in the center of the room about 40" away from the ground. Make sure the area is clear and estimate the size of the room to determine cycle length.

Area	Disinfect Time
~225 ft <sup>2</sup>	15 minutes
~450 ft <sup>2</sup>	30 minutes
~550 ft <sup>2</sup>	45 minutes
~650 ft <sup>2</sup>	60 minutes

#### Manual Operation:

1. Plug in and power on.
2. Press "ON/OFF" button on touch panel.
3. Using the "Time Setting" button select your duration.
4. There is a 10 second delay, then the light activates.

#### Remote Operation:

1. Plug in and power on.
2. Press "ON/OFF" button on the remote control.
3. Select your duration using a "Time Setting" button.
4. There is a 10 second delay, then the light activates.

**Motion Sensor:** This activates 20 seconds after the lamp is switched on. When motion is detected within 16 feet the light will turn off, then turn back on after 20 seconds of no motion. To activate or deactivate the sensor, hold down the radar button on the unit until it chimes.